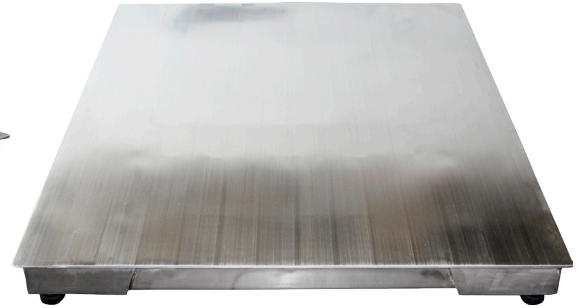


# PP-916 STAINLESS STEEL FLOOR SCALES

All Stainless Steel NTEP Approved Pallet Scale model was designed with the food and chemical industry in mind. Not only does it provides high accuracy and repeatability under continuous heavy industrial usage, but it also prevents ingress of moisture, food and other kinds of foreign matter with its hermetic sealing process.



PP-900BSL



Heavy-duty metal cable with water-proof protective outer coating

Product	Capacity	Dimensions
PP-916SS-15K	5,000 lb x 1 lb	4' x 4' x 4.2"
PP-916SS-10K	10,000 lb x 2 lb	5' x 5' x 4.2"

## PP-916SS SCALE FEATURES:

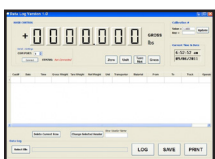
- Heavy Duty, Easy Setup Stainless Steel Floor Scale
- Height Adjustable Ball and Cup Leveling Feet
- Top Access to Leveling Feet/ Side Access to Junction Box
- Four NTEP certified alloy steel load cells
- NEMA 4x Watertight Stainless Steel Junction Box
- 4 Stainless Steel load cells
- Load Cell Capacity is 2X the Scale Capacity for a 200% Overload Protection
- 20' Heavy Duty Metal Shielded Quick Connecting Cable
- Complete scale and indicator package
- Channel construction for superior strength
- Rugged diamond deck safety treadplate
- Eyebolts for easy lifting when needed
- Factory pre-calibrated for quick setup
- Certified -- NTEP at 5000 divisions, Class III

## PP-900 INDICATOR FEATURES:

- Stainless steel washdown housing
- Multiple weighing units: (lb/kg/g/oz/lb:oz)
- Gross/Tare/Zero functions
- Multiple Hold functions
- Count weighing
- Accumulation weighing
- Overload / Underload alarm
- Power saving mode
- Automatic date and time update
- Ability to modify gravity based on different geographical locations
- Splash proof keyboard and display
- Able to connect to a scoreboard
- NTEP approved for 5,000 divisions
- 1" LED or LCD display with backlight
- Options: Relay & Analog output



## OPTIONAL ACCESSORIES:



Optional data logging software



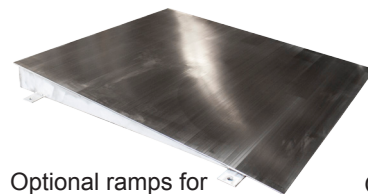
Optional Label Printer



Optional Table Printer



Optional scoreboard



Optional ramps for easy loading



Optional Indicator Column